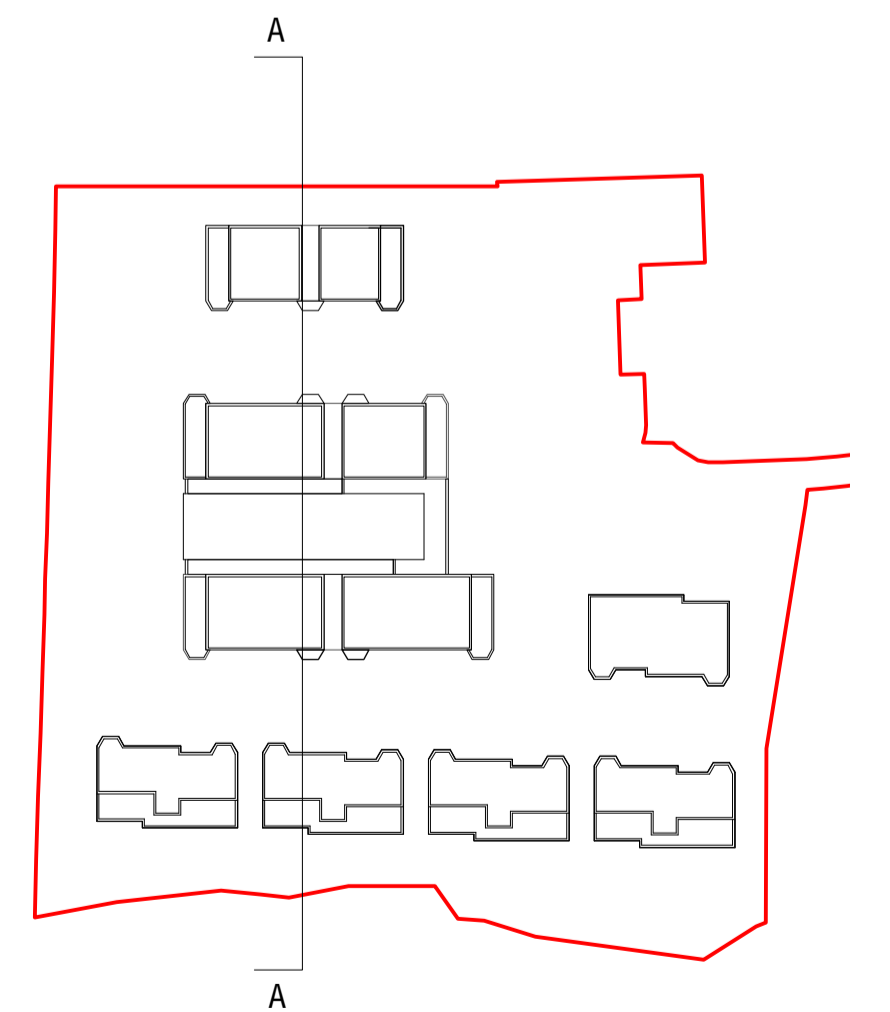




- | | | | | | | |
|----------------------------------|--|--------------------------|--------------------|------------------------|--------------------------------------|---|
| 1 BRICK ARCHWAY TO MAIN ENTRANCE | 6 ROUTE THROUGH TO ENTRANCE | 11 PLANTED GREEN ROOF | 16 COMMON ROOM | 21 GYM | A BRICKWORK - NELISSEN BRICKS, TORBA | F PROJECTING TRIANGULAR BAY WINDOWS |
| 2 ENTRANCE TO STUDENT ROOMS | 7 ROUTE DOWN TO LOWER COURTYARD | 12 LANDSCAPE/TREE BUFFER | 17 INTERNAL STREET | 22 INTERNAL BIKE STORE | B WHITE RE-CONSTITUTED STONE | G POWDER COATED ALUMINIUM CURTAIN WALLING |
| 3 KITCHEN BAY | 8 BIKE STORE | 13 TREES IN BACKGROUND | 18 RECEPTION | | C GREY RE-CONSTITUTED STONE | H POWDER COATED ALUMINIUM CLADDING |
| 4 CENTRAL VOLUME | 9 BIKE SHELTER | 14 PARK BEYOND | 19 BEDROOM | | D GREY RE-CONSTITUTED STONE SPANDREL | I GLAZED ROOFLIGHT |
| 5 SETBACK TO REDUCE VOLUME | 10 WINDOW/VENTILATION AT CORRIDOR ENDS | 15 GARDEN | 20 CORRIDOR | | E POWDER COATED ALUMINIUM WINDOWS | J PV PANELS |



**Stephen Marshall
(Urbanism) Ltd**
Gainsborough Studios
1 Poole Street, London N1 5EB
T: 020 7033 3130

SITE CROSS SECTION



PROJECT: The Grove
TITLE: Sections
DATE: 21.01.2021
SCALE: 1:200 @ A1

P40