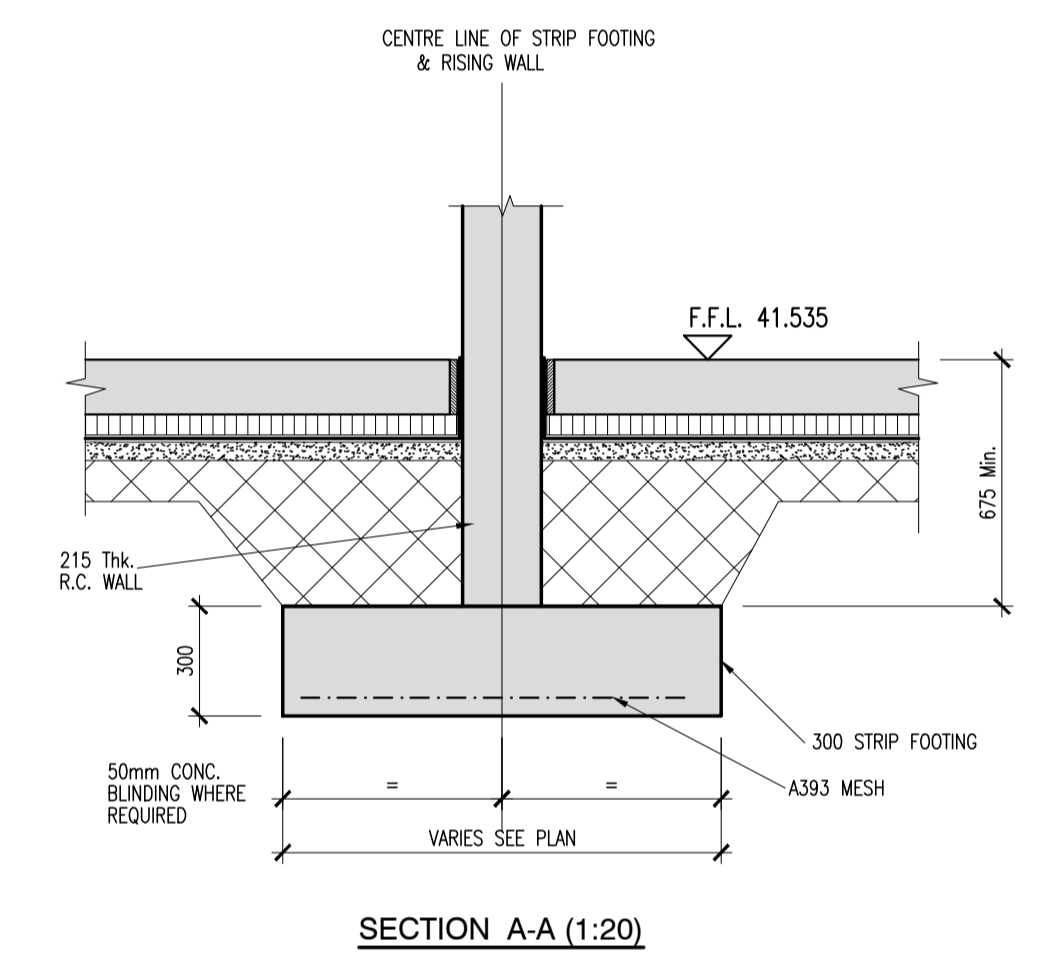
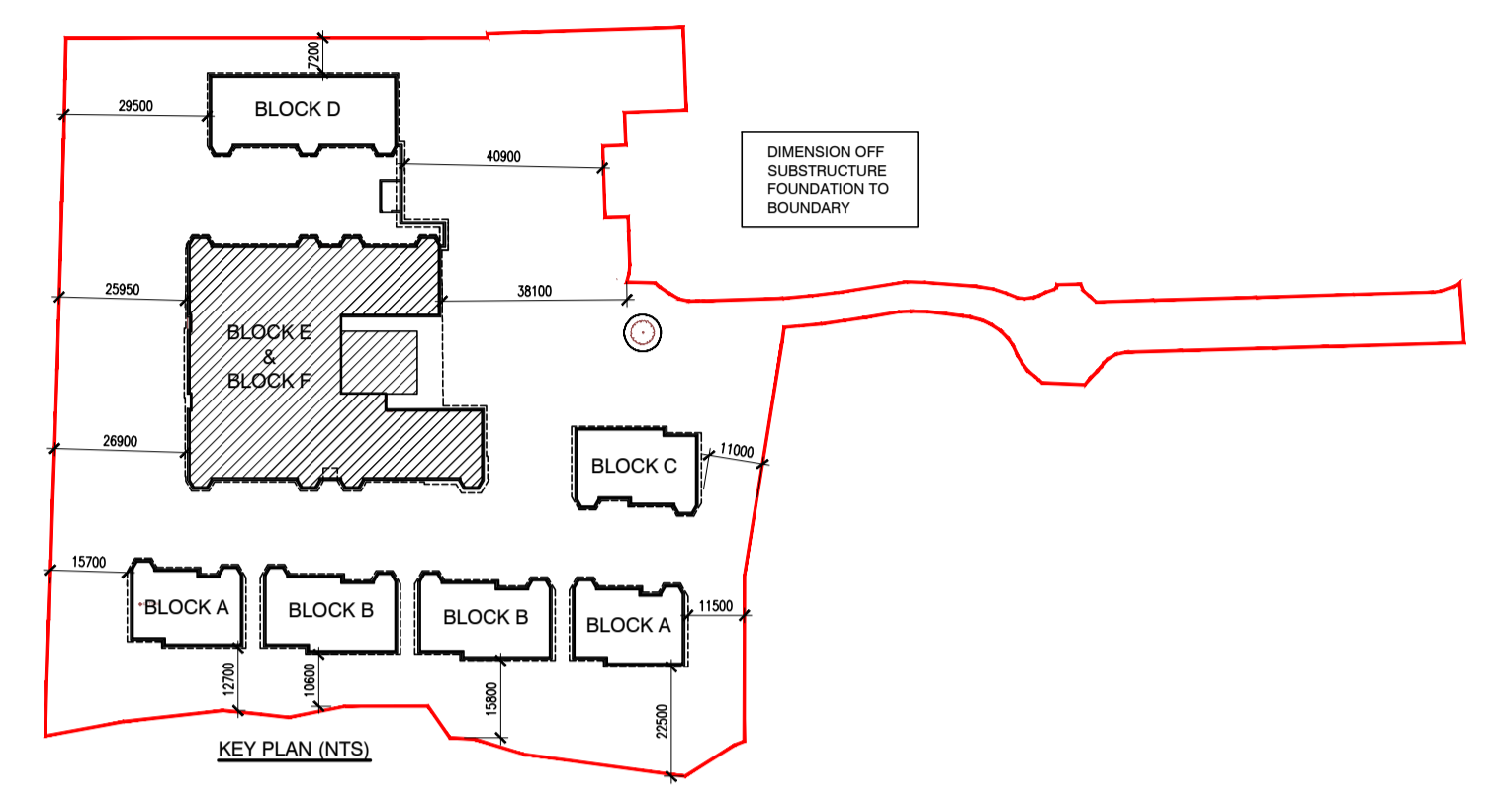
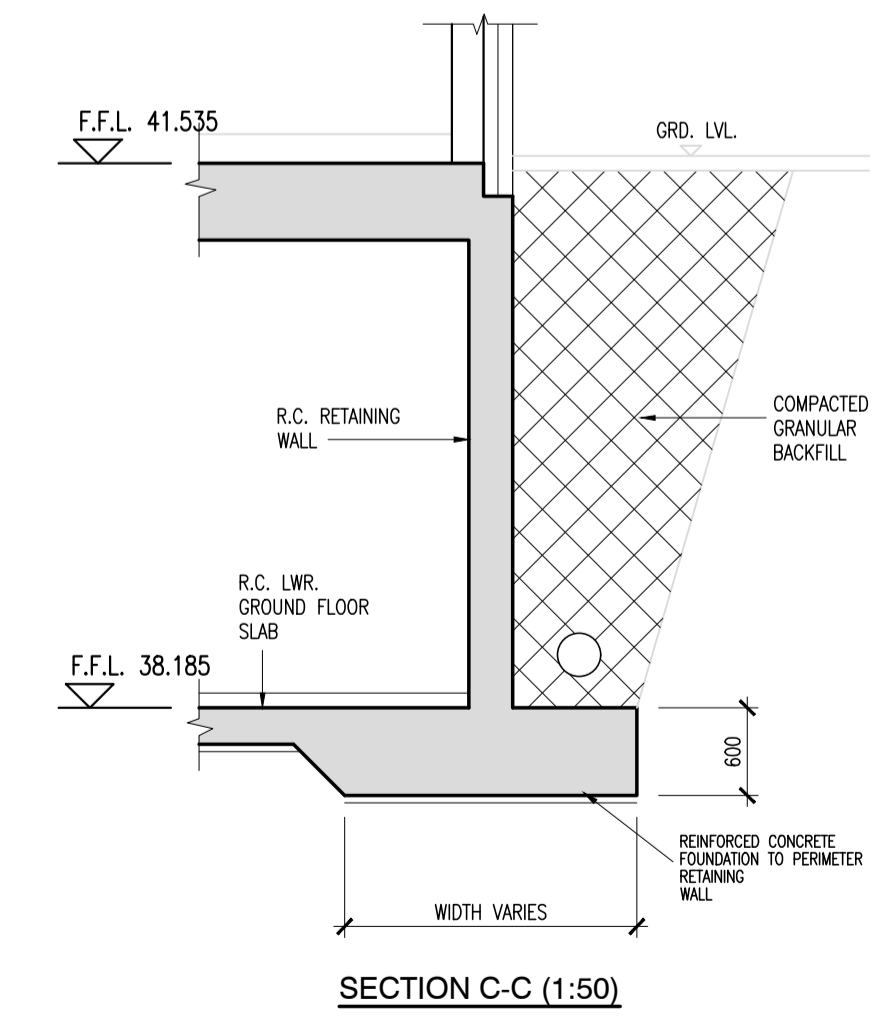


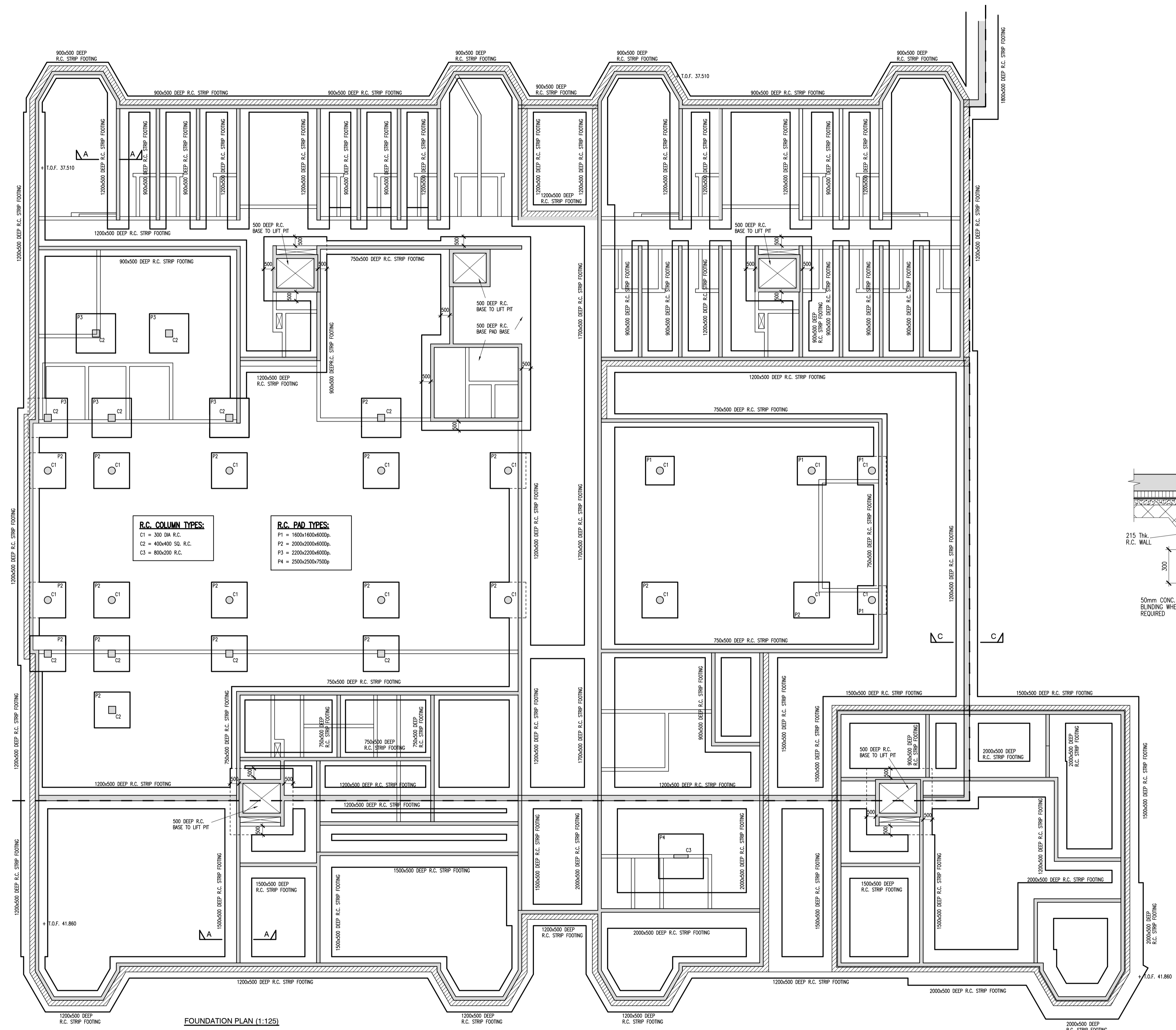
NOTES:



SECTION A-A (1:20)



SECTION C-C (1:50)



FOUNDATION PLAN (1:125)

R.C. COLUMN TYPES:

- C1 = 300 DIA R.C.
- C2 = 400x400 SQ. R.C.
- C3 = 800x200 R.C.

R.C. PAD TYPES:

- P1 = 1600x1600x400
- P2 = 2000x2000x400
- P3 = 2200x2200x400
- P4 = 2500x2500x750

PO2	08-02-21	ISSUED FOR PLANNING	TTR	JDH
PO1	28.01.21	ISSUED FOR INFORMATION	TTR	JDH
rev	date	description	by	chkd.
		A - Approved		
		B - Approved with comments		
		C - Do not use		

client approval

subtality issue purpose

S2 - INFORMATION SHD STAGE 3 PLANNING

DBFL Consulting Engineers
Civil, Structural & Transportation Engineering
www.dbfl.ie

DUBLIN OFFICE: Ormeau House, Upper Ormeau Quay, Dublin 7, D07 W704
PHONE: +353 1 406 4000
CDORK OFFICE: Phoney House, Monahan Road, Cork, T12 H1XX
PHONE: +353 01 7 204950
WATERFORD OFFICE: Suite 10 The Atrium, Martine Gate, Canada Street, Waterford, X91 W028
PHONE: +353 01 309 560

project ref.

THE GROVE SHD - STUDENT ACCOMMODATION SCHEME

drawing title

BLOCKS E & F FOUNDATION PLAN

client

STEPHEN MARSHALL (URBANISM) LTD.

designed by	author	scale	sheet size
JDH	TTR	1:200	A1
drawing no.	revision		
200012-DBFL-EF-F1-DR-8000	P02		