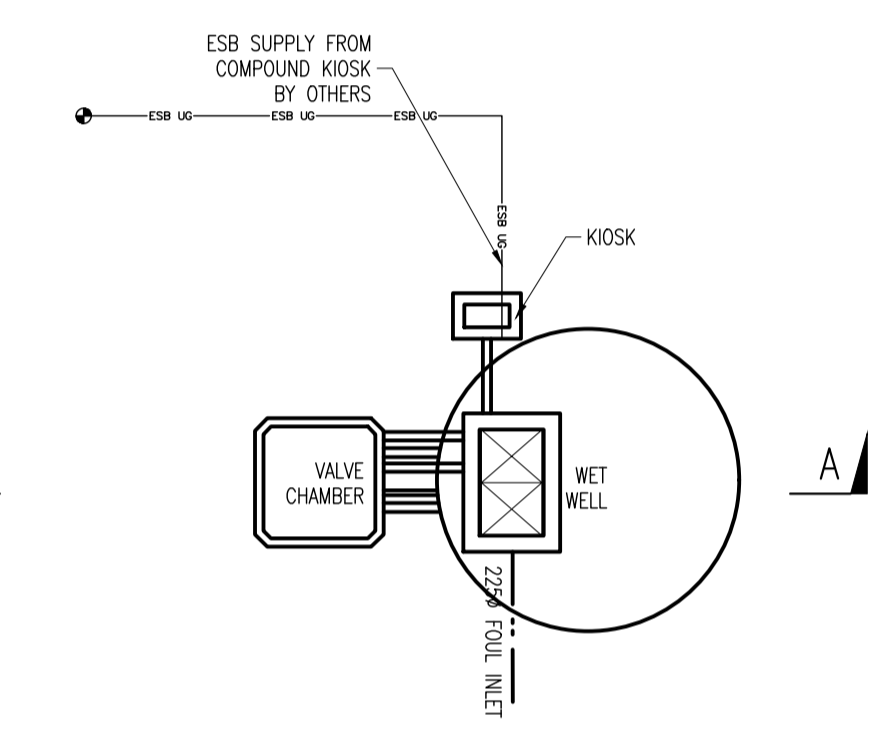
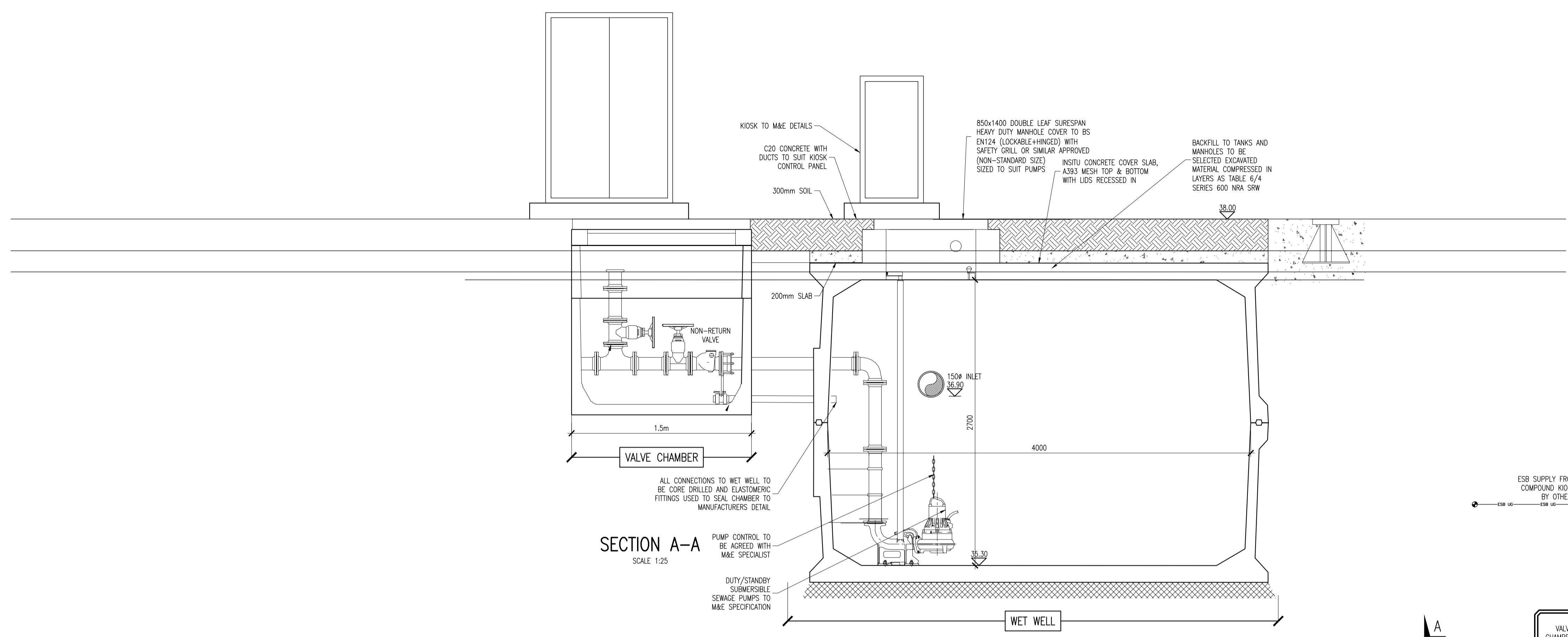


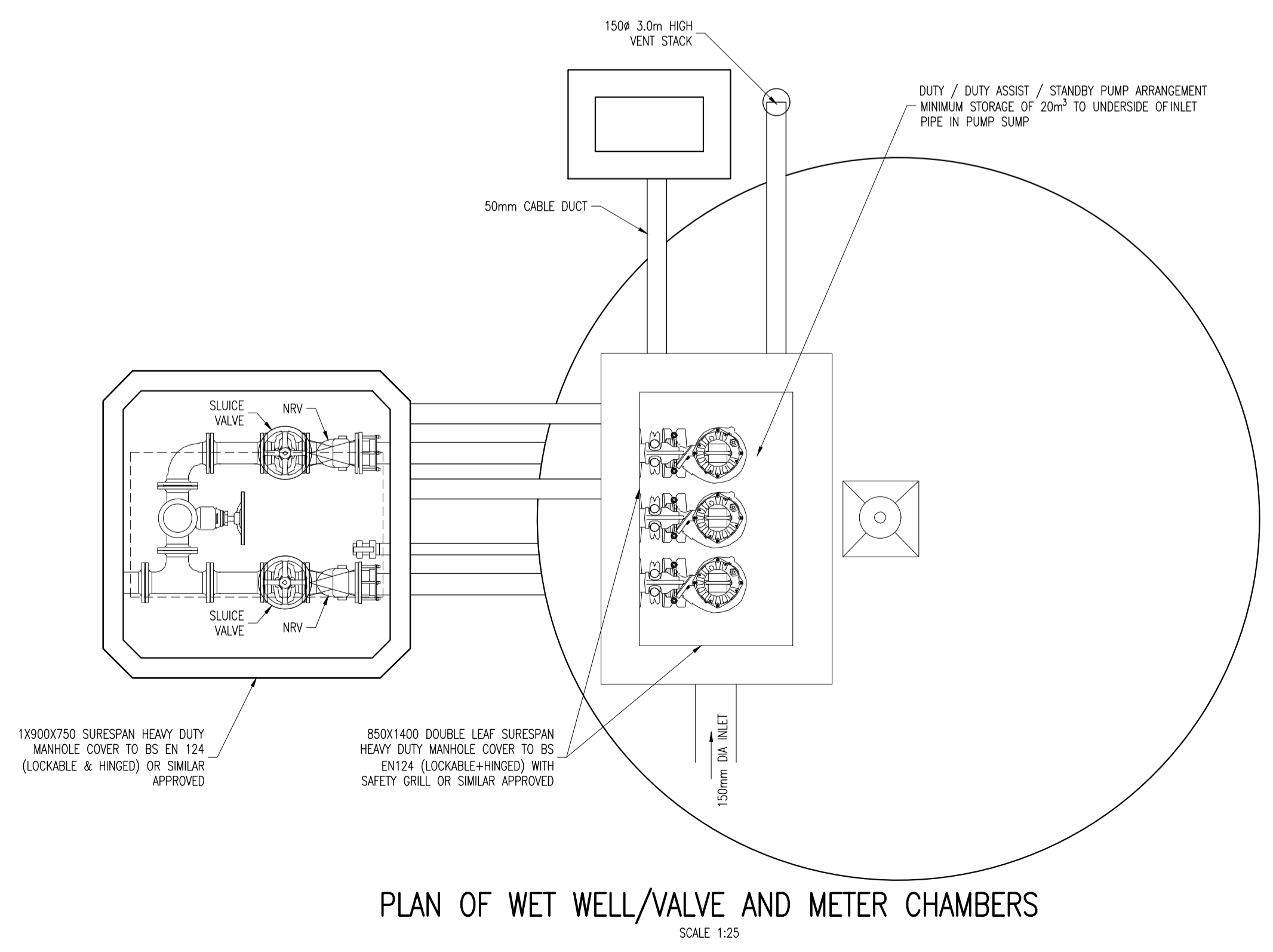
NOTES:

NOTES

- CONTRACTOR TO ALLOW FOR ALARM SYSTEMS LINKED TO SIM CARD NOTIFICATION GSM & SYSTEM.
- PUMPING STATION TO BE DESIGNED IN ACCORDANCE WITH LOCAL AUTHORITY REQUIREMENTS FOR SEWAGE PUMPING STATIONS.
- THE PUMPS, ONE DUTY, ONE STANDBY SHALL BE OF THE CENTRIFUGAL, UNCHOKEABLE, SUBMERSIBLE TYPE.
- PUMPS TO BE 3 PHASE DUTY/STANDBY ARRANGEMENT MIN. SOLIDS HANDLING SIZE TO BE 80mm.
- PUMP TO BE EQUIPPED WITH QUICK RELEASE COUPLINGS COMPLETE WITH GALVANISED GUIDE RAILS, LIFTING CHAINS, CABLE SUSPENDERS AND CHAIN HOOKS.
- ALL PIPE WORK SHALL BE DUCTILE IRON, COMPLETE WITH FLANGED COUPLINGS AND BENDS AS REQUIRED.
- ALL PIPE WORK SHALL BE ADEQUATELY BRACED AND ASSEMBLED WITH ZINC PLATED BOLTS, NUTS WASHERS AND GASKETS.
- KIOSK BASE WILL BE R.C. 200mm DEEP. LOCATION OF DUCTS INSERTS TO BE AGREED WITH CIVIL/M&E CONTRACTOR PRIOR TO INSTALLATION.
- A MAGNETIC FLOW METER SHALL BE INSTALLED IN A SEPARATE CHAMBER ADJACENT TO THE VALVE CHAMBER.
- ALL ACCESS COVERS/FRAMES TO BE HINGE AND LOCKABLE TYPE D400 TO BS EN 124. LIDS SHOULD BE SEALED TO PREVENT ODOURS.
- DRAWINGS TO BE READ IN CONJUNCTION WITH STRATEGIC SITE SERVICES LAYOUT DRG
- DUCTILE IRON PIPEWORK ENTERING THE WET-WELL TO BE CAST INTO WALLS WITH PUDDLE FLANGES ON THE PIPEWORK.
- DAWIT POINT TO BE AGREED ON SITE WITH M&E CONTRACTOR.
- 3 PHASE POWER SUPPLY TO KIOSK TO BE BROUGHT BY OTHERS
- GROUNDWATER TABLE LEVEL ASSUMED 2.5m BELOW GROUND LEVEL
- PE DIAMETERS ARE TO OUTSIDE OF PIPE. REFER TO MANUFACTURER'S INFO FOR INTERNAL DIAMETERS



GENERAL ARRANGEMENT
SCALE 1:100



TYPICAL INSITU BALLAST CONCRETE SPECIFICATION:

CONCRETE GRADE:	C28/35
MIN. CEMENT CONTENT:	320 kg/m³
MAX. W/C RATIO:	0.55
MAX. AGGREGATE SIZE:	20mm
STEEL FIBRE DOSAGE:	20 kg/m³
STEEL FIBRE TYPE:	DRAMIX RL 45/50 BN (OR SIMILAR)

STANDARD LID DESIGN LOADS: (WET WELL)

IMPOSED LOAD:	10 kN/m² UDL OR 5,850 kg WHEEL LOAD
DEAD LOAD:	UP TO 1m OVERBURDEN

STANDARD UNIT WEIGHTS: (WET WELL)

STANDARD BASE UNIT:	6.1 TONNES
3m RISER:	4.0 TONNES
LID UNIT:	1.5 TONNES

STANDARD DESIGN LOADS: (36m³ TANK)

LID:	
IMPOSED LOAD:	10 kN/m² UDL OR 5,850 kg WHEEL LOAD
DEAD LOAD:	UP TO 2m OVERBURDEN
TANK:	
IMPOSED SURCHARGE:	10 kN/m² UDL (1A LOADING EQUIVALENT TO BS 5400-2)

NOTE: LARGE POINT LOADS SHOULD BE AVOIDED IN THE IMMEDIATE VICINITY OF THE TANK

STANDARD UNIT WEIGHTS: (36m³ TANK)

BASE UNIT:	12.67 tonnes
ROOF UNIT:	12.67 tonnes

P01	11-02-2021	STAGE 3 SHD PLANNING	GMC	DMW
rev	date	description	by	chkd.
		A - Approved		
		B - Approved with comments		
		C - Do not use		

client approval
suitability S2 - INFORMATION issue purpose SHD STAGE 3 PLANNING

DBFL Consulting Engineers
Civil, Structural & Transportation Engineering
www.dbfl.ie

DUBLIN OFFICE: Ormond House, Upper Ormond Quay, Dublin 7, D07 W704
PHONE: +353 1 400 4000

CORK OFFICE: Phoenix House, Monahan Road, Cork, T12 H1XV
PHONE: +353 (0) 21 2054538

WATERFORD OFFICE: Suite 10 The Arkun, Marzana Gate, Canada Street, Waterford, X91 W028
PHONE: +353 51 309 500

project ref. THE GROVE SHD - STUDENT ACCOMMODATION SCHEME

drawing title TYPICAL SURFACE WATER PUMPING ARRANGEMENT

client COLBEAM LIMITED

designed by	author	scale	sheet size
DCG	JJB	AS NOTED	A1
drawing no.		revision	
200012-DBFL-CS-SP-DR-C-5007		P01	